



10/20AMP Module DC to Dc power supply > FM10-100/FM20-100



FEATURES

- * Compact Size 2"x1", 2"x1.6"
- * PCB Mount
- * 10A and 20A Filter Module
- * 75VDC Input Voltage Maximum
- * Suitable for use with Half Brick And Quarter Brick Series



MODEL NUMBER	INPUT VOLTAGE	INPUT SURGE VOLTAGE	OUTPUT RATED CURRENT	DC RESISTANCE (+Vin to +Vo)	DC RESISTANCE (-Vin to -Vo)
FM10-100	75 VDC max.	100 VDC max.	10 A max.	11.5 mΩ typ.	4.5 mΩ typ.
FM20-100	75 VDC max.	100 VDC max.	20 A max.	9.5 mΩ typ.	5.7 mΩ typ.

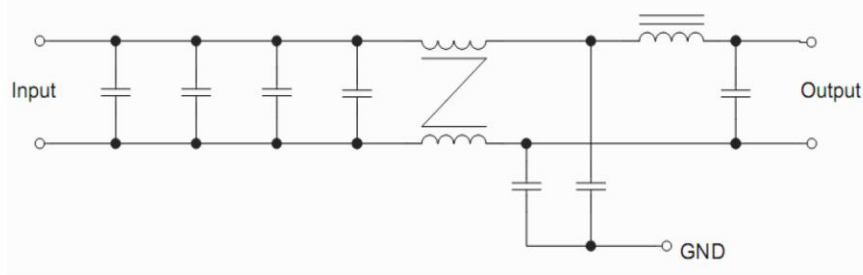


Figure1 Internal Schematic for FM10-100 Module

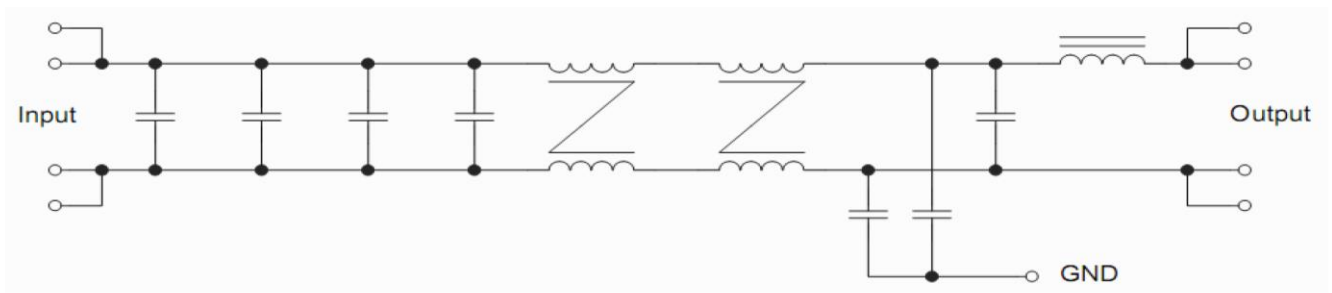


Figure2 Internal Schematic for FM20-100 Module



E-Star Power Development Co., Ltd. (E-STAR)
1F., No.40, Juren Ln., Sec. 2, Sanmin Rd., Banciao Dist., New Taipei City
22069, Taiwan (R.O.C.)
Phone : 886-2-2957 5580 Fax : 886-2-2957 7473

10/20AMP Module DC to Dc power supply > FM10-100/FM20-100

SPECIFICATIONS

All Specifications Typical At Nominal Line, Full Load, and 25°C Unless Otherwise Noted

INPUT SPECIFICATIONS:

Input Voltage Range 75Vdc max.
Input Surge Voltage 100Vdc/100ms
Input Rated Current See Table

GENERAL SPECIFICATIONS:

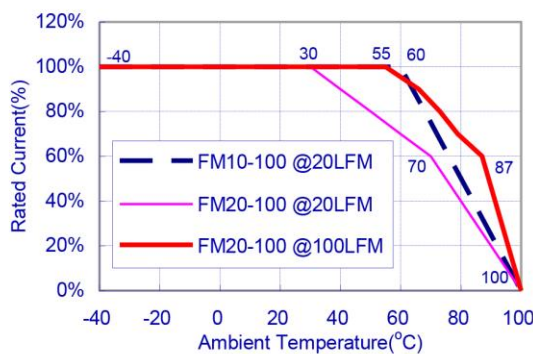
Isolation VoltageInput/GND..... 1500Vdc min.
.....Output/GND.....500Vdc min.
Isolation Resistance.....10⁷ohm min.
DC Resistance.....See Table
Operating Case Temperature Range (note1) -40°C to +100°C
Storage Temperature Range -55°C to +105°C

Dimensions:
FM10: 2.00x1.00x0.46inches (50.8x25.4x11.7 mm)
FM20: 2.00x1.60x0.50inches (50.8x40.6x12.7 mm)
Case Materials Plastic Case with Epoxy Potting
Weight FM10: 30g
..... FM20: 55g

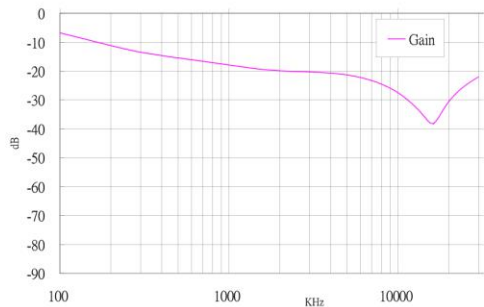
NOTE :

1. Maximum case temperature under any operating condition should not exceed 100°C.

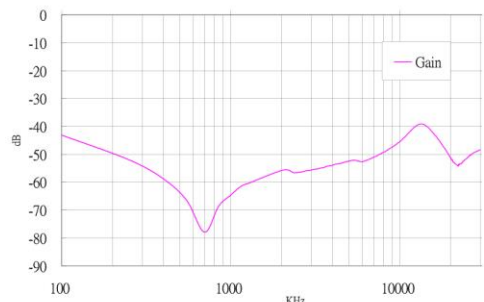
Typical Derating curve for Natural Convection (20LFM)



Common-Mode Insertion Loss

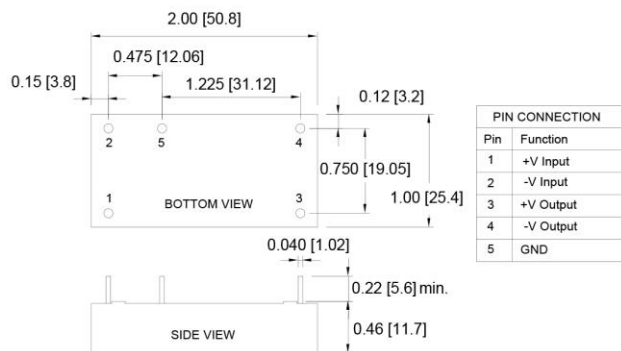


Differential-Mode Insertion Loss



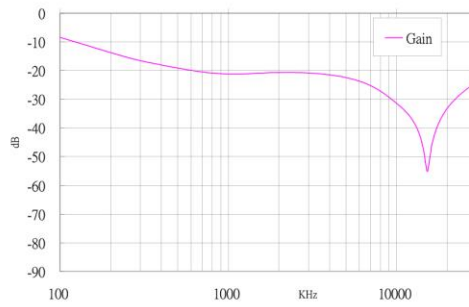
Typical Common-mode and Differential-mode Loss for FM10-100

DIMENSIONS:
NOTE: Pin Size is 0.04" Inch (1.02mm) DIA
All Dimensions In Inches (mm)
Tolerances Inches: X.XX= ±0.02, X.XXX= ±0.010
Millimeters: X.X= ±0.5, X.XX=±0.25

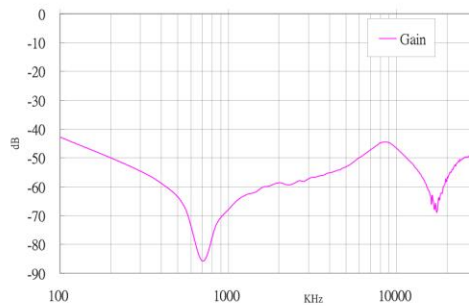


FM10-100 Package

Common-Mode Insertion Loss

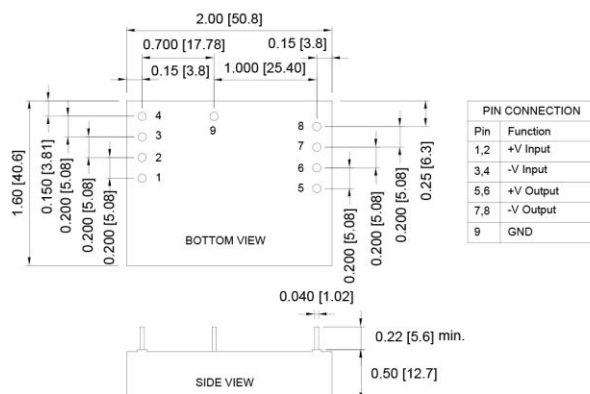


Differential-Mode Insertion Loss



Typical Common-mode and Differential-mode Loss for FM20-100

DIMENSIONS:
NOTE: Pin Size is 0.04" Inch (1.02mm) DIA
All Dimensions In Inches (mm)
Tolerances Inches: X.XX= ±0.02, X.XXX= ±0.010
Millimeters: X.X= ±0.5, X.XX=±0.25



FM20-100 Package