



E-Star Power Development Co., Ltd. (E-STAR)

1F., No.40, Juren Ln., Sec. 2, Sanmin Rd., Banciao Dist., New Taipei City  
22069, Taiwan (R.O.C.)

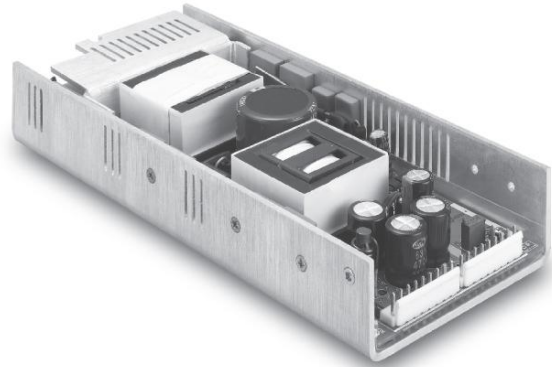
Phone : 886-2-2957 5580 Fax : 886-2-2957 7473

**350W Open Frame type Single output power supply < CFM350S**

# CFM350S

S E R I E S

**350 WATT  
SINGLE OUTPUT  
AC-DC POWER SUPPLY  
WITH PFC**



### Features

- Universal Input: 90~264Vac
- 1U Low Profile
- EMI meets EN55022 Class B
- Active PFC Meets EN61000-3-2
- High Efficiency Up to 90%
- Remote Voltage Sense



MODEL	VOLTAGE OUTPUT	OUTPUT CURRENT (A)		RIPPLE & NOISE <sup>1</sup>	VOLTAGE ACCURACY <sup>2</sup>	LINE REG. <sup>3</sup>	VOLTAGE ADJ. RANGE	LOAD REG. <sup>4</sup>	EFFICIENCY (TYPICAL)
		RATED1	RATED2						
CFM350S-120	+12V	29.2	25	150mVp-p	± 2.0%	± 0.5%	10.8 ~ 13.2	± 1%	88%
CFM350S-150	+15V	23.35	20	150mVp-p	± 2.0%	± 0.5%	13.5 ~ 16.5	± 1%	88%
CFM350S-240	+24V	14.6	12.5	150mVp-p	± 2.0%	± 0.5%	21.6 ~ 26.4	± 1%	90%
CFM350S-360	+36V	9.73	8.4	150mVp-p	± 2.0%	± 0.5%	32.4 ~ 39.6	± 1%	90%
CFM350S-480	+48V	7.3	6.3	150mVp-p	± 2.0%	± 0.5%	43.2 ~ 52.8	± 1%	91%

Note: 1. RATED1: 15CFM Air Flow



**350W Open Frame type Single output power supply < CFM350S**

**Specifications**

**INPUT SPECIFICATIONS:**

AC Input Voltage.....90 ~ 264Vac  
 Frequency .....47 to 63Hz  
 Inrush Current......85A max. @230Vac  
 EMI.....CISPR/FCC Class B  
 Isolation .....Input to output = 4242VDC  
 Leakage Current/240Vac.....2mA max.

**OUTPUT SPECIFICATIONS:**

Total Rated Output Power.....350W  
 (with 15CFM air flow or optional fan)  
 Remote Voltage Sense.....Compensates for wire Voltage drop  
 Hold-up Time .....16mS typ.  
 Over Voltage Protection .....Recycle AC input to restart  
 Over Temperature Protection .....Auto Recovery  
 Short Circuit Protection..... Auto Recovery

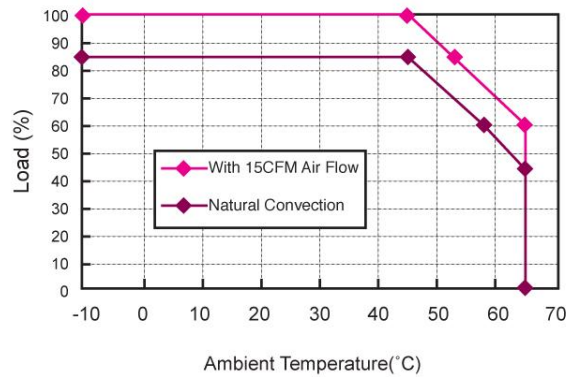
**ENVIRONMENTAL CHARACTERISTICS:**

Operating Temperature .....-10 ~ 65°C  
 45~65°C with 2%/°C Derating  
 PSU will be in thermal protection for exceeding the rated power output  
 or the operating temperature  
 Storage Temperature .....-40 ~ 85°C

**MECHANICAL CHARACTERISTICS:**

Dimensions .....9.26x4.00x1.59Inches (235.2x101.6x40.40mm)

**CFM350S Series Derating Curve**



**NOTE:**

- 1: Add a 0.1uF ceramic capacitor and a 47uF E.L. capacitor to output for Ripple & Noise measuring @20MHz BW.
- 2: Voltage accuracy is set at 60% rated load and 25°C.Ta.
- 3: Line regulation is measured from High Line to Low Line with rated load.
- 4: Load regulation is measured at 60%±40% rated load.

**Mechanical Specification**

All Dimensions In Inches[mm]  
 Tolerance Inches: x.xx= ±0.04, x.xxx= ±0.010  
 Millimeters: x.x= ±1.0, x.xx= ±0.25

