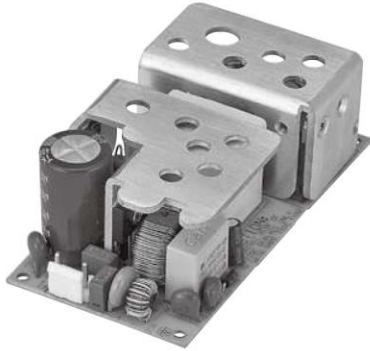




30~65W Open Frame type Medical power supply > EPM1065

Medical Open Frame



Features

- 100-240VAC Universal Input
- 2 x MOPP Compliance, IEC60601-1 Approval
- Protections:
 Short circuit / Over voltage / Over current
- MTBF > 100,000 hours

EPM V WWW XX Y Z

- V:** Numbers of outputs
- WWW:** Total power
- XX:** Output voltage of main power
- Y:** Output voltage except for main power
- Z:** Output current except for main power

	MODEL No.	OUTPUT POWER (W)	OUTPUT VOLTAGE (Vdc)	LOAD		LOAD REGULATION	RIPPLE & NOISE
				MIN. (Io)	MAX. (I)		
Single Output	EPM1065XXYZ	65W	12,15,19,24,36,48V		5.41A	± 5% Max.	± 2% Max.
	EPM1060XXYZ	60W	12,15,19,24,36,48V		5A	± 5% Max.	± 2% Max.
	EPM1050XXYZ	50W	5,12,15,19,24,36,48V		10A	± 5% Max.	± 2% Max.
	EPM1045XXYZ	45W	5,12,15,19,24,36,48V		9A	± 5% Max.	± 2% Max.
	EPM1040XXYZ	40W	5,12,15,19,24,36,48V		8A	± 5% Max.	± 2% Max.
Dual Output	EPM2WWWXXYZ	30~65W	12,15,19,24V	0.5	5.20A	± 5% Max.	± 2% Max.
			5V	0.5	4A	± 5% Max.	± 2% Max.
Triple Output	EPM3WWWXXYZ	45~65W	12,24V	0.5	3.86A	± 5% Max.	± 2% Max.
			5V	0.5	4A	± 5% Max.	± 2% Max.
			-12V		0.3A		

NOTE:

- 1 : Ripple & Noise is measured by using 20MHz bandwidth limited oscilloscope and terminated each output with a 0.1uF ceramic capacitor & parallel with 47uF aluminum capacitor at full load and nominal line.
- 2 : Line regulation is defined by changing ±10% of input voltage from nominal line at rated load.
- 3 : Max. Power (W) ≥ Vo x Io

Electrical Specification

INPUT

- Input Range: 100 to 240 VAC
- Frequency: 50 to 60Hz
- Input Current: ≤1.5A
- Inrush Current: 60A/100VAC 120A/230VAC
- Hold Up Time: ≥8.3ms
- Turn On Time: ≤3s

OUTPUT

- Short Circuit Protection: Auto Recovery
- Over Current Protection: Auto Recovery
- Over Voltage Protection: Latch-off or Auto Recovery

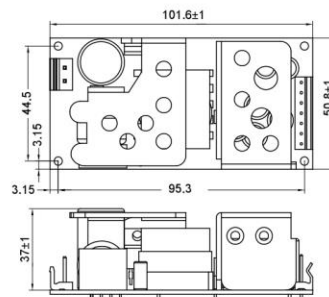
ENVIRONMENT

- Operating Temperature: 0 to 50°C
- Storage Temperature: -20 to 85°C
- Operating Humidity: 10% to 90%
- Storage Humidity: 5% to 95%

SAFETY

- Complied with UL/cUL 60601-1, TUV EN 60601-1, CB IEC 60601-1, FCC, CE

Mechanical Specification



- Mechanical Size: 101.6 x 50.8 x 37 (mm)
- AC Input Connector: Molex 09-65-2048 or equivalent
- DC Output Connector: JST VH Series or equivalent
- Pin Assignment:

Single Output	P1-3	P4-6	P7	
	GND	5~48V	5V(option)	
Multi Output	P1	P2-3	P4-5	P6-7
	-12V	5V	GND	12~24V

- Weight: 200g



E-Star Power Development Co., Ltd. (E-STAR)
 1F., No.40, Juren Ln., Sec. 2, Sanmin Rd., Banciao Dist., New Taipei City
 22069, Taiwan (R.O.C.)
 Phone : 886-2-2957 5580 Fax : 886-2-2957 7473

30~65W Open Frame type Medical power supply > EPM1065

Medical Open Frame

E PM V WWW XX Y Z

PM	V	WWW		XX		Y	Z
TYPE	NUMBERS OF OUTPUTS	TOTAL POWER		OUTPUT VOLTAGE OF MAIN POWER		OUTPUT VOLTAGE EXCEPT FOR MAIN POWER	OUTPUT CURRENT EXCEPT FOR MAIN POWER
Medical Open Frame	1 2 3	030 040 045	050 060 065	05=5V 12=12V 15=15V 19=19V	24=24V 36=36V 48=48V	0 = NA D = 5V(0.5A) E = 5V(2A~4A) T = 5V+(- 12V/0.3A)	0=NA 2= 5V/2A 3= 5V/3A 4= 5V/4A

MODEL NAME	MAIN - POWER			5V/0.5A- POWER			5V/2~4A POWER			-12V POWER			TOTAL POWER
	Vo1(V)	Io1(I)	Wo1(W)	Vo2(V)	Io2(I)	Wo2(W)	Vo2(V)	Io2(I)	Wo2(W)	Vo3(V)	Io3(I)	Wo3(W)	
EPM10651200	12	5.41	65										65
EPM10651500	15	4.33	65										65
EPM10651900	19	3.42	65										65
EPM10652400	24	2.70	65										65
EPM10653600	36	1.80	65										65
EPM10654800	48	1.35	65										65
EPM10601200	12	5.00	60										60
EPM10601500	15	4.00	60										60
EPM10601900	19	3.15	60										60
EPM10602400	24	2.50	60										60
EPM10603600	36	1.66	60										60
EPM10604800	48	1.25	60										60
EPM10500500	5	10.00	50										50
EPM10501200	12	4.16	50										50
EPM10501500	15	3.33	50										50
EPM10501900	19	2.63	50										50
EPM10502400	24	2.08	50										50
EPM10503600	36	1.38	50										50
EPM10504800	48	1.04	50										50
EPM10450500	5	9.00	45										45
EPM10451200	12	3.75	45										45
EPM10451500	15	3.00	45										45
EPM10451900	19	2.36	45										45
EPM10452400	24	1.87	45										45
EPM10453600	36	1.25	45										45
EPM10454800	48	0.93	45										45
EPM10400500	5	8.00	40										40
EPM10401200	12	3.33	40										40
EPM10401500	15	2.66	40										40
EPM10401900	19	2.10	40										40
EPM10402400	24	1.66	40										40
EPM10403600	36	1.11	40										40
EPM10404800	48	0.83	40										40
EPM10300500	5	6.00	30										30
EPM10301200	12	2.50	30										30
EPM10301500	15	2.00	30										30
EPM10301900	19	1.57	30										30
EPM10302400	24	1.25	30										30

Single output



E-Star Power Development Co., Ltd. (E-STAR)
 1F., No.40, Juren Ln., Sec. 2, Sanmin Rd., Banciao Dist., New Taipei City
 22069, Taiwan (R.O.C.)
 Phone : 886-2-2957 5580 Fax : 886-2-2957 7473

30~65W Open Frame type Medical power supply > EPM1065

MODEL NAME	MAIN - POWER			5V/0.5A- POWER			5V/2~4A POWER			-12V POWER			TOTAL POWER
	Vo1(V)	Io1(I)	Wo1(W)	Vo2(V)	Io2(I)	Wo2(W)	Vo2(V)	Io2(I)	Wo2(W)	Vo3(V)	IO3(I)	Wo3(W)	
EPM206512D0	12	5.20	62.5	5	0.5	2.5							65
EPM206515D0	15	4.16	62.5	5	0.5	2.5							65
EPM206519D0	19	3.28	62.5	5	0.5	2.5							65
EPM206524D0	24	2.60	62.5	5	0.5	2.5							65
EPM206512E3	12	4.16	50				5	3	15				65
EPM206524E3	24	2.08	50				5	3	15				65
EPM206512E4	12	3.75	45				5	4	20				65
EPM206524E4	24	1.87	45				5	4	20				65
EPM205012D0	12	3.95	47.5	5	0.5	2.5							50
EPM205015D0	15	3.16	47.5	5	0.5	2.5							50
EPM205019D0	19	2.50	47.5	5	0.5	2.5							50
EPM205024D0	24	1.97	47.5	5	0.5	2.5							50
EPM205012E3	12	2.91	35				5	3	15				50
EPM205024E3	24	1.45	35				5	3	15				50
EPM205012E4	12	2.50	30				5	4	20				50
EPM205024E4	24	1.25	30				5	4	20				50
EPM204512D0	12	3.54	42.5	5	0.5	2.5							45
EPM204515D0	15	2.83	42.5	5	0.5	2.5							45
EPM204519D0	19	2.23	42.5	5	0.5	2.5							45
EPM204524D0	24	1.77	42.5	5	0.5	2.5							45
EPM204512E2	12	2.91	35				5	2	10				45
EPM204524E2	24	1.45	35				5	2	10				45
EPM204512E3	12	2.50	30				5	3	15				45
EPM204524E3	24	1.25	30				5	3	15				45
EPM204012D0	12	3.12	37.5	5	0.5	2.5							40
EPM204015D0	15	2.50	37.5	5	0.5	2.5							40
EPM204019D0	19	1.97	37.5	5	0.5	2.5							40
EPM204024D0	24	1.56	37.5	5	0.5	2.5							40
EPM204012E2	12	2.50	30				5	2	10				40
EPM204024E2	24	1.25	30				5	2	10				40
EPM204012E3	12	2.08	25				5	3	15				40
EPM204024E3	24	1.04	25				5	3	15				40
EPM203012D0	12	2.29	27.5	5	0.5	2.5							30
EPM203015D0	15	1.83	27.5	5	0.5	2.5							30
EPM203019D0	19	1.44	27.5	5	0.5	2.5							30
EPM203024D0	24	1.14	27.5	5	0.5	2.5							30
EPM203012E2	12	1.66	20				5	2	10				30
EPM203024E2	24	0.83	20				5	2	10				30
EPM306512T3	12	3.86	46.4				5	3	15	-12	0.3	3.6	65
EPM306512T4	12	3.45	41.4				5	4	20	-12	0.3	3.6	65
EPM305012T3	12	2.61	31.4				5	3	15	-12	0.3	3.6	50
EPM305012T4	12	2.20	26.4				5	4	20	-12	0.3	3.6	50
EPM304512T2	12	2.61	31.4				5	2	10	-12	0.3	3.6	45
EPM304512T3	12	2.20	26.4				5	3	15	-12	0.3	3.6	45
EPM306524T3	24	1.93	46.4				5	3	15	-12	0.3	3.6	65
EPM306524T4	24	1.72	41.4				5	4	20	-12	0.3	3.6	65
EPM305024T3	24	1.30	31.4				5	3	15	-12	0.3	3.6	50
EPM305024T4	24	1.10	26.4				5	4	20	-12	0.3	3.6	50
EPM304524T2	24	1.30	31.4				5	2	10	-12	0.3	3.6	45
EPM304524T3	24	1.10	26.4				5	3	15	-12	0.3	3.6	45